

Spitsbergen - Northeast Greenland - Aurora Borealis, Including Long Hikes

A classic three island voyage: Ice, Inuit and Remoteness

Dates:

23 Aug - 5 Sep, 2025

Tripcode:

HDS11-25

Duration:

13 nights

Ship:

m/v Hondius

Embarkation:

Longyearbyen

Disembarkation:

Akureyri

Language:

English speaking voyage

Possible combinations

This cruise can be combined with other cruises for a better experience and price

1

20%
Combination
Discount



23 Days Extensive Spitsbergen - Northeast Greenland - Aurora Borealis

A full circumnavigation of Spitsbergen combined with a voyage into northeast Greenland, this expansive expedition cruise explores some of the best spots in the high Arctic - including a visit to Scoresby Sund, Earth's largest fjord, along with exhilarating hikes away from the vessel and many opportunities to see the enchanting northern lights.

Dates: 14 Aug - 5 Sep, 2025
Ship: [m/v Hondius](#)
Embarkation – Disembarkation: Longyearbyen – Akureyri
Duration: 13 nights
Price: **10480 USD**
20% off from individual cruises



Benefits:

- ✓ More activities
- ✓ More experiences
- ✓ Cheaper in total
- ✓ Chance to see bears!
- ✓ Etc

[More info](#)

Cruises included:



Around Spitsbergen and Nordaustlandet

Full Spitsbergen Circumnavigation

HDS10-25 This cruise around Spitsbergen gives you a great chance to see whales, foxes, reindeer, seals, and polar bears.

Cruise date: 14 Aug - 23 Aug, 2025
Price: 5650 USD



Spitsbergen - Northeast Greenland - Aurora Borealis, Including Long Hikes

A classic three island voyage: Ice, Inuit and Remoteness



HDS11-25 The Spitsbergen and Northeast Greenland cruise sails waters filled with breath-taking scenery. The expedition passes through areas that are home to seals, seabirds, whales, and polar bears, topped off with nighttime viewing of the Northern Lights.

Cruise date: 23 Aug - 5 Sep, 2025
Price: 7450 USD

ITINERARY

PLEASE NOTE:

The probability of sailing into Scoresbysund is high (based on our experiences from 1993 – 2019), but there is still a chance (about 10%) that ice will obstruct passage into the fjord system. All itineraries are for guidance only. Programs may vary depending on ice, weather, and wildlife conditions. Landings are subject to site availabilities, permissions, and environmental concerns per AECO regulations. Official sailing plans and landing slots are scheduled with AECO prior to the start of the season, but the expedition leader determines the final plan. Flexibility is paramount for expedition cruises. The average cruising speed of our vessel is 10.5 knots.

The Spitsbergen and Northeast Greenland cruise sails waters filled with breath-taking scenery. The expedition passes through areas that are home to seals, seabirds, whales, and polar bears, topped off with nighttime viewing of the Northern Lights.

Long Hikes: -

Long hikes are for groups of 24 passengers maximum, accompanied by two armed expedition staff and a Zodiac that will sail ahead to watch for polar bears along the shoreline. Passengers who join this activity should have the willingness and ability to walk at least 15 km (9 miles) in semi-rough terrain that includes shorelines, tundra, low hills, and river crossings. Walks will take around six hours from start to finish, rest times included. We will walk at a modest pace and not cross any alpine terrain. Passengers who do not take part in long walks will have a landing in the morning at the start point of the walk, then sail to the end point of the walk for their second landing in the afternoon.

Day 1: Largest town, biggest island

You touch down in Longyearbyen, the administrative center of Spitsbergen, the largest island of the Svalbard archipelago. Enjoy strolling around this former mining town, whose parish church and Svalbard Museum make for fascinating attractions. Though the countryside appears stark, more than a hundred species of plant have been recorded in it. In the early evening the ship sails out of Isfjorden, where you might spot the first minke whale of your voyage.

Day 2: Route to Raudfjorden

Sailing to Raudfjorden, on the north coast of Spitsbergen, you take in an expansive fjord spilling with glaciers – and maybe even visited by ringed and bearded seals. The cliffs and shoreline of this fjord also support thriving seabird colonies, rich vegetation, and the possibility of polar bears.

Day 3 – 4: Onward to east Greenland

You may eventually see the jagged edge of the east Greenland sea ice flashing into sight ahead, depending on the conditions. Keep watch for whales and migrating seabirds here.

Day 5: Tundra, mountains, and icebergs

As you approach Greenland, you may sail through the sea ice into Foster Bay and land at Myggebukten. Beyond the old hunters' hut (where Norwegian trappers hunted for polar bear and Arctic fox in the first half of the 20th century), there is a sprawling tundra populated by musk oxen, with geese floating the small lakes. From here you sail through Kaiser Franz Josef Fjord, surrounded by towering mountains and bright interior icebergs. An alternate route is Sofia Sound, a narrower waterway.

For those who choose to attend, we have our first long walk (6-7 hours) of the voyage today. We start at Myggbukta station and head into Badlanddal, then turn south to Fangsthytte near Kap Bennet. A Zodiac will sail ahead of the walking party and parallel to the coast to watch out for bears.

Day 6: The islands of Antarctic Sound

You arrive at Teufelschloss (Devil's Castle), a mountain with layered geology. On the other side of the fjord is Blomsterbugt and the

intended landing site. In the afternoon you head into Antarctic Sound, where you find the islands of Ruth, Maria, and Ella. Maria is the most likely spot for a landing.

Day 7: Alpefjord's lofty peaks

In the morning you enter Segelsällskapet's Fjord, with the streaked slopes of the Berzelius Mountains bordering the north side. You land on the south shore, where ancient sedimentary formations lie right at your feet. A hike takes you near a small lake with good chances to see musk oxen, Arctic hares, and ptarmigans. In the afternoon the ship ventures into Alpefjord, aptly named for the spire-like peaks that thrust up around it. You may then embark on a Zodiac cruise around Gully Glacier, which once blocked access to the interior of these waters. Continuing deep into the fjord, you experience a definitive Greenland adventure.

Day 8: Sights of the Arctic autumn

The first half of the day you spend in Antarctic Havn, an extensive valley where you can spot groups of musk oxen. At this time of year, the sparse vegetation is dressed in the fiery colors of autumn.

Day 9: Arriving at Earth's largest fjord

Today you reach Scoresbysund, sailing along the glaciated Boons Kyst. You may also enjoy a Zodiac cruise past one of the glacier fronts, along with a visit to the basalt columns and ice formations of Vikingebugt.

In the afternoon, we plan to sail by the east coast of Milne Land among a multitude of giant icebergs. If we can also land at Charcot Havn, we will make a walk to the Charcot Glacier. We will then continue by Bjørneør and sail into Øfjord, where we might also make a landing.

Day 10: Colors of the cape

The goal is a Zodiac cruise near Sorte Ø, surrounded by icebergs. Their austere blue-white contrasts sharply with the sediment slopes nearby. The afternoon plan is to sail through the northern parts of Røde Fjord and into Harefjord, with the chance to see musk oxen and warm autumnal foliage.

Day 11: Enormous bergs, Arctic hares

In the morning you encounter colossal icebergs, some over 100 meters (328 feet) high and more than a kilometer (.62 mile) long. Most of them are grounded, as the fjord is only about 400 meters deep (1,312 feet). You then land near Sydkap, with fine views of Hall Bredning and a good shot of seeing Arctic hares.

Today's long walk goes from Sydkap to Nordøstbugt (12 km, 7.5 miles to the northeast), where the river coming from Holger Danskes Briller flows into the sea. We plan to walk south along the shore to Satakajik, seeing whale vertebrae and the remains of Thule summer houses. Passengers who opt out of the long walking group will join us at this location for their second excursion of the day.

Day 12: Settlement at Scoresbysund

Today you make a tundra landing on Liverpool Land, in Hurry Inlet. The afternoon stop is Ittoqqortoormiit, the largest settlement in Scoresbysund at about five hundred inhabitants. At the post office you can buy stamps for your postcards, or just stroll around to see the sled dogs and drying skins of seals and musk oxen. In the afternoon you sail south, passing the picturesque landscapes of the Blossville Coast.

Day 13: Sea life under the northern lights

A sea day grants you the opportunity to spot whales and seabirds – and at night, the magical northern lights.

Day 14: Journey's end at Akureyri

Every adventure, no matter how grand, must eventually come to an end. You disembark in Akureyri, where on request you can transfer (**T**) by chartered bus (a six-hour drive that you must book in advance) to the bus stop Harpa Concert Hall and Conference Centre at Austurbakki, Reykjavík, taking home memories that will accompany you wherever your next adventure lies.

Included in this voyage

- *Voyage aboard the indicated vessel as indicated in the itinerary*
- *All meals throughout the voyage aboard the ship including snacks, coffee and tea.*
- *All shore excursions and activities throughout the voyage by Zodiac.*
- *Program of lectures by noted naturalists and leadership by experienced expedition staff.*
- *Free use of rubber boots and snowshoes.*
- *Transfers and baggage handling between the airport, hotels and ship only for those passengers on the group flights to Longyearbyen.*
- *All miscellaneous service taxes and port charges throughout the programme.*
- *AECO fees and governmental taxes.*
- *Comprehensive pre-departure material.*

Excluded from this voyage

- *Any airfare, whether on scheduled or charter flights*
- *Pre- and post- land arrangements.*
- *Passport and visa expenses.*
- *Government arrival and departure taxes.*
- *Meals ashore.*
- *Baggage, cancellation and personal insurance (which is strongly recommended).*
- *Excess baggage charges and all items of a personal nature such as laundry, bar, beverage charges and telecommunication charges.*
- *Transfer supplement for bus shuttle between Akureyri (ship) and bus stop Harpa Concert Hall and Conference Centre at Austurbakki, Reykjavik (6 hours).*
- *The customary gratuity at the end of the voyages for stewards and other service personnel aboard (guidelines will be provided).*

ACTIVITIES YOU CAN PARTICIPATE IN



Long hikes

FREE

Passengers who join this activity should have the willingness and ability to walk at least 15 km (9 miles) in semi-rough terrain. Walks will take around six hours from start to finish, rest times included.

CABINS & PRICES



Quadruple Porthole

- Cabin size between 15,3 m² and 16 m²
- 2 portholes
- 2 upper & lower berths
- Small sofa
- Private shower & toilet
- Flatscreen TV
- Desk & chair
- Telephone and WiFi (supplemented)
- Hair dryer
- Cabinet
- Safe deposit box
- Wardrobe
- This cabin is suitable for families traveling with children, or passengers who do not require a twin or more luxurious cabin



Complete cabin

Price for the complete cabin, fully occupied.

29800 USD



Sharing berth

Share your cabin with others for the best price.

7450 USD



Triple Porthole

- Cabin size between 15,9 m² and 16 m²
- 2 portholes
- 1 upper berth & 2 lower berths
- Small sofa
- Private shower & toilet
- Flatscreen TV
- Desk & chair
- Telephone and WiFi (supplemented)
- Hair dryer
- Cabinet
- Safe deposit box
- Wardrobe
- This cabin is suitable for families traveling with children, or passengers who do not require a twin or more luxurious cabin



Complete cabin

Price for the complete cabin, fully occupied.

27000 USD



Sharing berth

Share your cabin with others for the best price.

9000 USD



Twin Porthole

- Cabin size between 13,3 m² and 16 m²
- 2 portholes
- 2 single beds
- Small sofa
- Private shower & toilet
- Flatscreen TV
- Desk & chair
- Telephone and WiFi (supplemented)
- Hair dryer
- Cabinet
- Safe deposit box
- Wardrobe
- Please note that all cabins will not necessarily have the same layout and surface area, nor will they be identical to the examples used in the photos



Complete cabin

Price for the complete cabin, fully occupied.

20900 USD



Single cabin

Price for the complete cabin occupied by 1 person (1.7x the shared rate).

17765 USD



Sharing berth

Share your cabin with others for the best price.

10450 USD



More photos



Twin Window

- Cabin size between 12,1 m² and 14,3 m²
- 1 window
- 2 single beds
- Small sofa
- Private shower & toilet
- Flatscreen TV
- Desk & chair
- Telephone and WiFi (supplemented)
- Hair dryer
- Cabinet
- Safe deposit box
- Wardrobe
- Please be aware that the view from some windows might be partially obstructed due to the design requirements of the ship
- Please note that all cabins will not necessarily have the same layout and surface area, nor will they be identical to the examples used in the photos



Complete cabin

Price for the complete cabin, fully occupied.

23000 USD



Single cabin

Price for the complete cabin occupied by 1 person (1.7x the shared rate).

19550 USD



Sharing berth

Share your cabin with others for the best price.

11500 USD



Twin Deluxe

- Cabin size between 19,4 m² and 21,3 m²
- 2 windows
- 2 single beds
- Sofa
- Private shower & toilet
- Flatscreen TV
- Desk & chair
- Telephone and WiFi (supplemented)
- Refrigerator
- Coffee & tea maker
- Bathrobe
- Hair dryer
- Cabinet
- Safe deposit box
- Wardrobe



Complete cabin

Price for the complete cabin, fully occupied.

24300 USD



Single cabin

Price for the complete cabin occupied by 1 person (1.7x the shared rate).

20655 USD



Sharing berth

Share your cabin with others for the best price.

12150 USD



Superior

- Cabin size between 20,7 m² and 21,3 m²
- 2 windows
- 1 double bed
- Sofa
- Private shower & toilet
- Flatscreen TV
- Desk & chair
- Telephone and WiFi (supplemented)
- Refrigerator
- Coffee & tea maker
- Bathrobe
- Hair dryer
- Cabinet
- Safe deposit box
- Wardrobe



Complete cabin

Price for the complete cabin, fully occupied.

27100 USD



Single cabin

Price for the complete cabin occupied by 1 person (1.7x the shared rate).

23035 USD



Junior Suite

- Cabin size between 19,2 m² and 20 m²
- 1 double window
- 1 double bed
- Private shower & toilet
- Flatscreen TV
- Desk & chair
- Telephone and WiFi (supplemented)
- Refrigerator
- Coffee & tea maker
- Bathrobe
- Hair dryer
- Cabinet
- Safe deposit box
- Wardrobe



Complete cabin

Price for the complete cabin, fully occupied.

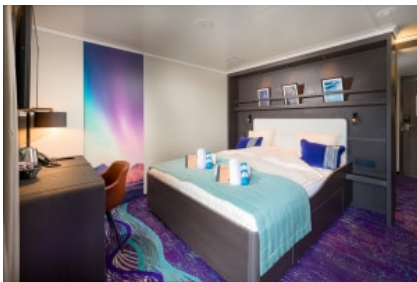
31000 USD



Single cabin

Price for the complete cabin occupied by 1 person (1.7x the shared rate).

26350 USD



Grand Suite with private balcony

- Cabin size 26,7 m²
- 1 double window
- 1 double bed
- Sofa
- Private balcony
- Private shower & toilet
- Flatscreen TV
- Desk & chair
- Telephone and WiFi (supplemented)
- Refrigerator
- Coffee & tea maker
- Bathrobe
- Hair dryer
- Cabinet
- Safe deposit box
- Wardrobe



Complete cabin

Price for the complete cabin, fully occupied.

33400 USD



Single cabin

Price for the complete cabin occupied by 1 person (1.7x the shared rate).

28390 USD