



East Greenland, Scoresby Sund - Aurora Borealis, Including Long Hikes

Witness the Northern Lights at Scoresby Sund

Dates:
5 Sep - 14 Sep, 2025

Tripcode:
HDS12-25

Duration:
9 nights

Ship:
m/v Hondius

Embarkation:
Akureyri

Disembarkation:
Akureyri

Language:
English speaking voyage

ITINERARY

PLEASE NOTE:

All itineraries are for guidance only. Programs may vary depending on ice, weather, and wildlife conditions. Landings are subject to site availabilities, permissions, and environmental concerns per AECO regulations. Official sailing plans and landing slots are scheduled with AECO prior to the start of the season, but the expedition leader determines the final plan. Flexibility is paramount for expedition cruises. The average cruising speed of our vessel is 10.5 knots.

The East Greenland – Scoresby Sund cruise crosses the Arctic Circle into the home waters of multiple species of whale. The expedition will spot huge icebergs as it journeys into the largest and deepest fjord system in the world. Along the way the Northern Lights is guiding our way.

Long Hikes: -

Long hikes are for groups of 24 passengers maximum, accompanied by two armed expedition staff and a Zodiac that will sail ahead to watch for polar bears along the shoreline. Passengers who join this activity should have the willingness and ability to walk at least 15 km (9 miles) in semi-rough terrain that includes shorelines, tundra, low hills, and river crossings. Walks will take around six hours from start to finish, rest times included. We will walk at a modest pace and not cross any alpine terrain. Passengers who do not take part in long walks will have a landing in the morning at the start point of the walk, then sail to the end point of the walk for their second landing in the afternoon.

Day 1: On the Iceland road

Your journey begins in the morning, where by request you can transfer via chartered bus (T) from bus stop Harpa Concert Hall and Conference Centre at Austurbakki, Reykjavik (the meeting point) to the ship in Akureyri (the embarkation point). You arrive in the afternoon after a six-hour drive through northern Iceland.

PLEASE NOTE: This transfer (T) must be booked and paid for in advance. In the early evening, the ship departs from the port of Akureyri, sailing north toward the Denmark Strait.

Day 2: Sailing to east Greenland

While sailing north you're likely to see fulmars, kittiwakes, gannets, and common guillemots. You then cross the Arctic Circle, possibly spotting whales. By evening, the first icebergs flash into sight with your approach to the east Greenland coast, near Brewster.

Day 3: Arriving at Earth's largest fjord

Today you reach Scoresbysund, sailing along the glaciated Volquart Boons Kyst. You may also enjoy a Zodiac cruise past one of the glacier fronts, along with a visit to the basalt columns and ice formations of Vikingebugt.

In the afternoon, we plan to sail by the east coast of Milne Land among a multitude of giant icebergs. If we can also land at Charcot Havn, we will make a walk to the Charcot Glacier. We will then continue by Bjørneør and sail into Øfjord.

Day 4: Colors of the cape

The goal is a Zodiac cruise near Sorte Ø, surrounded by icebergs. Their austere blue-white contrasts sharply with the sediment slopes nearby. The afternoon plan is to sail through the northern parts of Røde Fjord and into Harefjord, with the chance to see musk oxen and warm autumnal foliage.

Day 5: Enormous bergs, Arctic hares

In the morning you encounter colossal icebergs, some over 100 meters (328 feet) high and more than a kilometer (.62 mile) long. Most of them are grounded, as the fjord is only about 400 meters deep (1,312 feet). You then land near Sydkap, with fine views of Hall Bredning and a good shot of seeing Arctic hares.

Today's long walk goes from Sydkap to Nordøstbugt (12 km, 7.5 miles to the northeast), where the river coming from Holger Danskes Briller flows into the sea. We plan to walk south along the shore to Satakajik, seeing whale vertebrae and the remains of Thule summer houses. Passengers who opt out of the long walking group will join us at this location for their second excursion of the day.

Day 6: Settlement at Scoresbysund

Today you make a tundra landing on Liverpool Land, in Hurry Inlet. The afternoon stop is Ittoqqortoormiit, the largest settlement in Scoresbysund at about five hundred inhabitants. At the post office you can buy stamps for your postcards, or just stroll around to see the sled dogs and drying skins of seals and musk oxen. In the afternoon you sail south, passing the picturesque landscapes of the Blosserville Coast.

Day 7: Stewart Ø

The island of Stewart Ø is an important hunting station for the people of Scoresby Sund and also a good area to spot polar bears, narwhals, and the beautiful remains of Thule houses.

Day 8: Remote shores

Turner Sound and Rømer Fjord grant you the opportunity to sail far inland, as they have no glacier front at the head and are not clogged with ice. In this location, you may get the opportunity to spot narwhals.

Day 9: Sea life under the northern lights

A sea day grants you the opportunity to spot whales and seabirds – and at night, the magical northern lights.

Day 10: Journey's end at Akureyri

Every adventure, no matter how grand, must eventually come to an end. You disembark in Akureyri, where on request you can transfer (T) by chartered bus (a six-hour drive that you must book in advance) to the bus stop Harpa Concert Hall and Conference Centre at Austurbakki, Reykjavík, taking home memories that will accompany you wherever your next adventure lies.

Included in this voyage

- *Voyage aboard the indicated vessel as indicated in the itinerary*
- *All meals throughout the voyage aboard the ship including snacks, coffee and tea.*
- *All shore excursions and activities throughout the voyage by Zodiac.*
- *Program of lectures by noted naturalists and leadership by experienced expedition staff.*
- *Free use of rubber boots and snowshoes.*
- *All miscellaneous service taxes and port charges throughout the programme.*
- *AECO fees and governmental taxes.*
- *Comprehensive pre-departure material.*

Excluded from this voyage

- *Any airfare, whether on scheduled or charter flights*
- *Pre- and post- land arrangements.*
- *Passport and visa expenses.*
- *Government arrival and departure taxes.*

- *Meals ashore.*
- *Baggage, cancellation and personal insurance (which is strongly recommended).*
- *Excess baggage charges and all items of a personal nature such as laundry, bar, beverage charges and telecommunication charges.*
- *Transfer supplement for bus shuttle between Akureyri (ship) and bus stop Harpa Concert Hall and Conference Centre at Austurbakki, Reykjavik (6 hours).*
- *The customary gratuity at the end of the voyages for stewards and other service personnel aboard (guidelines will be provided).*

ACTIVITIES YOU CAN PARTICIPATE IN



Long hikes

FREE

Passengers who join this activity should have the willingness and ability to walk at least 15 km (9 miles) in semi-rough terrain. Walks will take around six hours from start to finish, rest times included.

CABINS & PRICES



Quadruple Porthole

- Cabin size between 15,3 m² and 16 m²
- 2 portholes
- 2 upper & lower berths
- Small sofa
- Private shower & toilet
- Flatscreen TV
- Desk & chair
- Telephone and WiFi (supplemented)
- Hair dryer
- Cabinet
- Safe deposit box
- Wardrobe
- This cabin is suitable for families traveling with children, or passengers who do not require a twin or more luxurious cabin



Complete cabin

Price for the complete cabin, fully occupied.

22600 USD



Sharing berth

Share your cabin with others for the best price.

5650 USD



Triple Porthole

- Cabin size between 15,9 m² and 16 m²
- 2 portholes
- 1 upper berth & 2 lower berths
- Small sofa
- Private shower & toilet
- Flatscreen TV
- Desk & chair
- Telephone and WiFi (supplemented)
- Hair dryer
- Cabinet
- Safe deposit box
- Wardrobe
- This cabin is suitable for families traveling with children, or passengers who do not require a twin or more luxurious cabin



Complete cabin

Price for the complete cabin, fully occupied.

21000 USD



Sharing berth

Share your cabin with others for the best price.

7000 USD



Twin Porthole

- Cabin size between 13,3 m² and 16 m²
- 2 portholes
- 2 single beds
- Small sofa
- Private shower & toilet
- Flatscreen TV
- Desk & chair
- Telephone and WiFi (supplemented)
- Hair dryer
- Cabinet
- Safe deposit box
- Wardrobe
- Please note that all cabins will not necessarily have the same layout and surface area, nor will they be identical to the examples used in the photos



Complete cabin

Price for the complete cabin, fully occupied.

16400 USD



Single cabin

Price for the complete cabin occupied by 1 person (1.7x the shared rate).

13940 USD



Sharing berth

Share your cabin with others for the best price.

8200 USD



More photos



Twin Window

- Cabin size between 12,1 m² and 14,3 m²
- 1 window
- 2 single beds
- Small sofa
- Private shower & toilet
- Flatscreen TV
- Desk & chair
- Telephone and WiFi (supplemented)
- Hair dryer
- Cabinet
- Safe deposit box
- Wardrobe
- Please be aware that the view from some windows might be partially obstructed due to the design requirements of the ship
- Please note that all cabins will not necessarily have the same layout and surface area, nor will they be identical to the examples used in the photos



Complete cabin

Price for the complete cabin, fully occupied.

17700 USD



Single cabin

Price for the complete cabin occupied by 1 person (1.7x the shared rate).

15045 USD



Sharing berth

Share your cabin with others for the best price.

8850 USD



Twin Deluxe

- Cabin size between 19,4 m² and 21,3 m²
- 2 windows
- 2 single beds
- Sofa
- Private shower & toilet
- Flatscreen TV
- Desk & chair
- Telephone and WiFi (supplemented)
- Refrigerator
- Coffee & tea maker
- Bathrobe
- Hair dryer
- Cabinet
- Safe deposit box
- Wardrobe



Complete cabin

Price for the complete cabin, fully occupied.

19000 USD



Single cabin

Price for the complete cabin occupied by 1 person (1.7x the shared rate).

16150 USD



Sharing berth

Share your cabin with others for the best price.

9500 USD



Superior

- Cabin size between 20,7 m² and 21,3 m²
- 2 windows
- 1 double bed
- Sofa
- Private shower & toilet
- Flatscreen TV
- Desk & chair
- Telephone and WiFi (supplemented)
- Refrigerator
- Coffee & tea maker
- Bathrobe
- Hair dryer
- Cabinet
- Safe deposit box
- Wardrobe



Complete cabin

Price for the complete cabin, fully occupied.

21300 USD



Single cabin

Price for the complete cabin occupied by 1 person (1.7x the shared rate).

18105 USD



Junior Suite

- Cabin size between 19,2 m² and 20 m²
- 1 double window
- 1 double bed
- Private shower & toilet
- Flatscreen TV
- Desk & chair
- Telephone and WiFi (supplemented)
- Refrigerator
- Coffee & tea maker
- Bathrobe
- Hair dryer
- Cabinet
- Safe deposit box
- Wardrobe



Complete cabin

Price for the complete cabin, fully occupied.

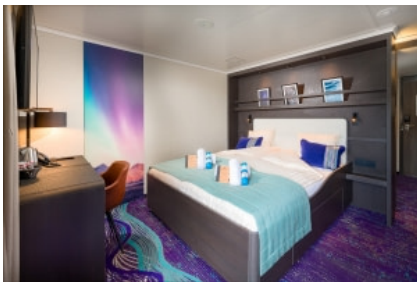
24300 USD



Single cabin

Price for the complete cabin occupied by 1 person (1.7x the shared rate).

20655 USD



Grand Suite with private balcony

- Cabin size 26,7 m²
- 1 double window
- 1 double bed
- Sofa
- Private balcony
- Private shower & toilet
- Flatscreen TV
- Desk & chair
- Telephone and WiFi (supplemented)
- Refrigerator
- Coffee & tea maker
- Bathrobe
- Hair dryer
- Cabinet
- Safe deposit box
- Wardrobe



Complete cabin

Price for the complete cabin, fully occupied.

26300 USD



Single cabin

Price for the complete cabin occupied by 1 person (1.7x the shared rate).

22355 USD